

QUIZ NO. 3

NAME _____ Score _____ /10

The differential amplifier below uses an ideal op amp. Find the values of R_1 , R_2 , R_3 and R_4 if the single-ended input resistances, R_{in1} and R_{in2} are to be $100\text{k}\Omega$ and the output voltage is to be $v_{out} = 10(v_1 - v_2)$.

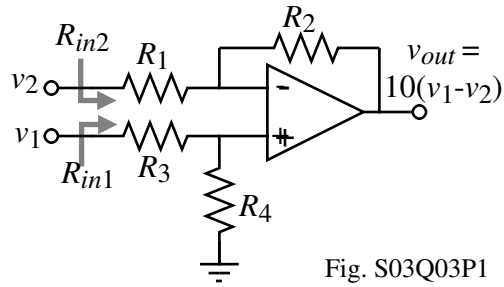


Fig. S03Q03P1