

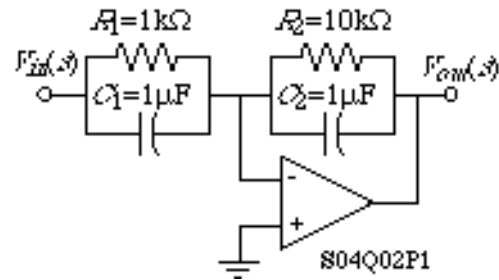
## QUIZ NO. 2

NAME \_\_\_\_\_ Score \_\_\_\_\_ /10

A circuit using an ideal op amp is shown.

(a.) Find the  $s$ -domain transfer function,  $V_{out}(s)/V_{in}(s)$  and solve for the numerical values of all roots.

(b.) Assuming the answer to part (a.) is given below, sketch an asymptotic magnitude and phase frequency response of this transfer function.



$$\frac{V_{out}(s)}{V_{in}(s)} = -10 \frac{s+100}{s+10}$$